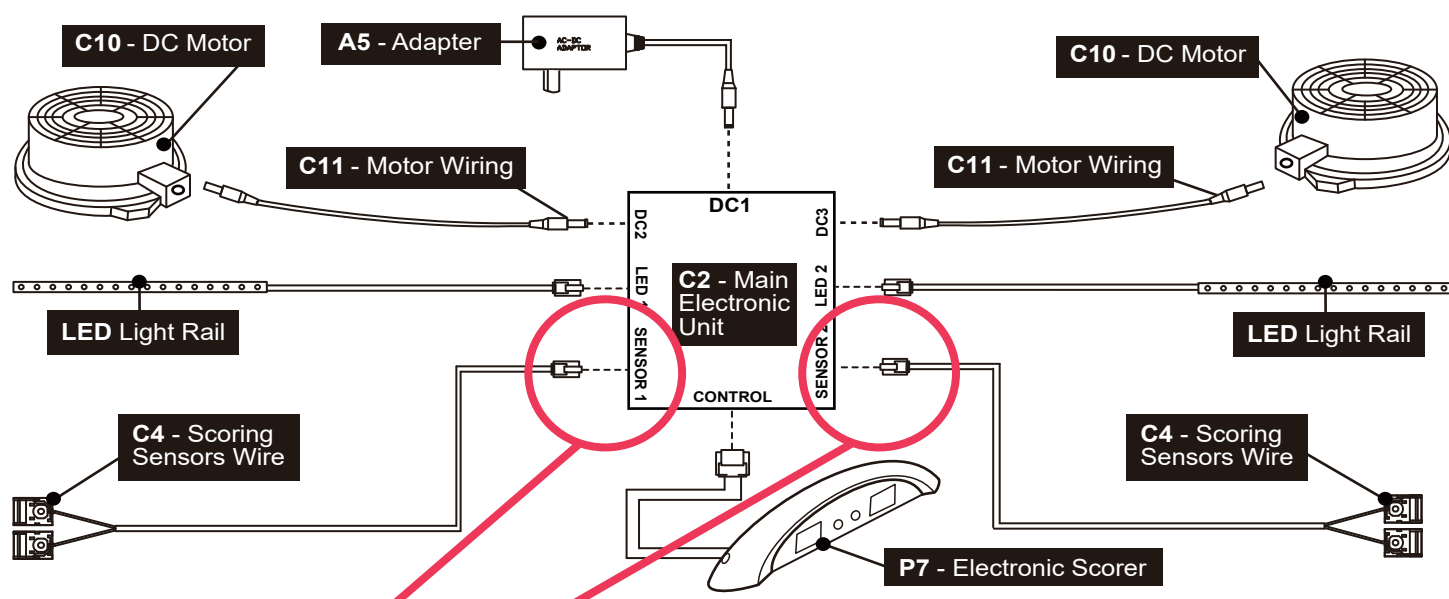
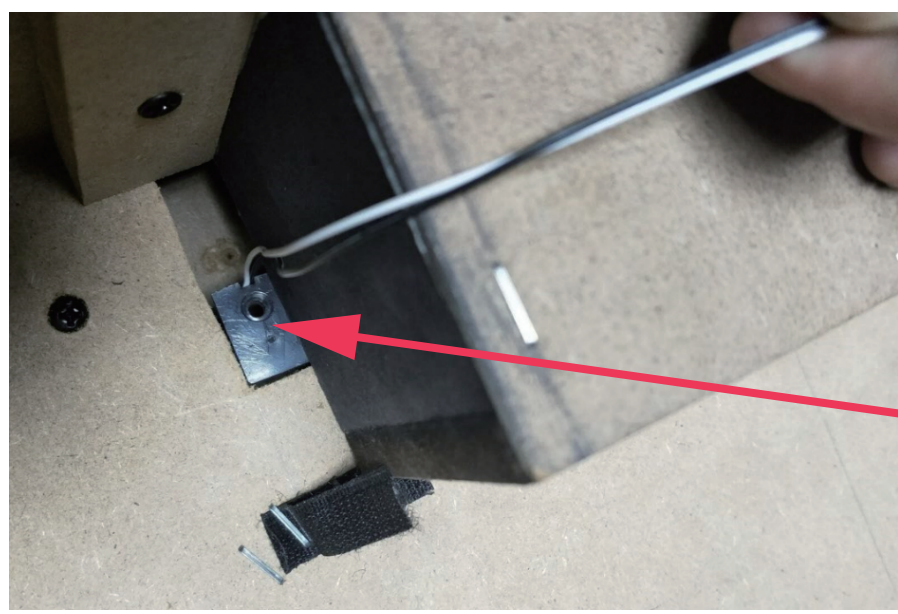


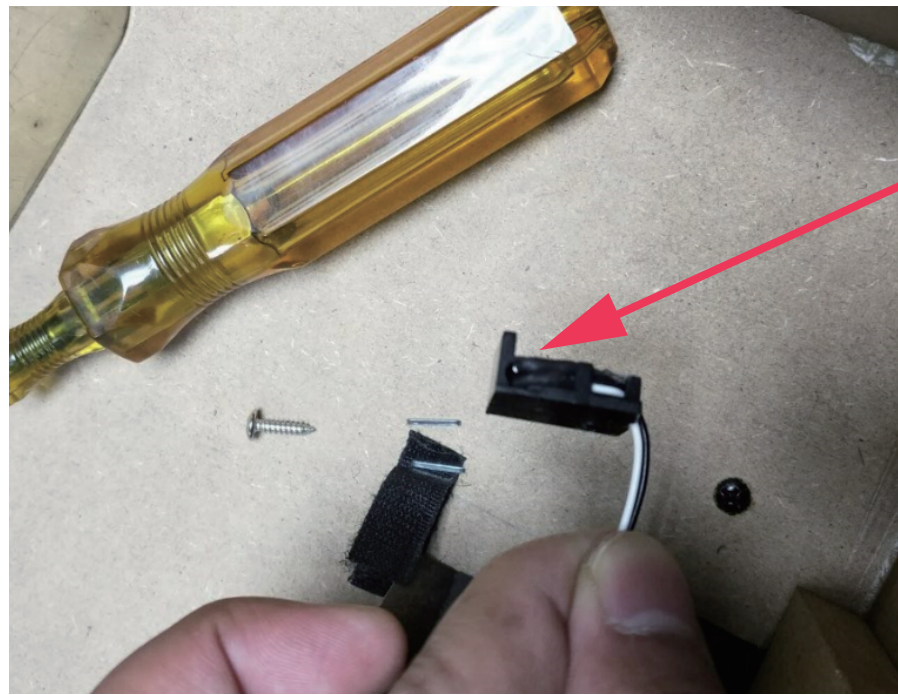
1. Unplug the male counterpart socket of C4 Scoring Sensor Wire from the C2 Main Electric Unit . Unscrew H4 screws on the P7 Electronic Scorer, and take it apart from the Table. Flip over the table with Four or more adults helps.



2. Unplug the plug of C4 Scoring Sensor Wire from the C2 Main Electric Unit before replacement.



3. Unscrew the screw of the IR sensor.



4. Before install back the New IR sensor make sure the sensor hole is forward inside of the MDF goal box.



5. Install back the new sensor with the previous screw.

6. First, feed the **P7 Electronic Scorer** plug through hole on one side of the long top apron as shown in **FIGURE 3**.

Next, feed the plug through underneath support beams and connect to Main Electronic Unit **C2** as shown in **FIGURE 3** and **DETAIL A**.

IMPORTANT NOTE: This connector will only fit into the C2 Main Electronic Unit if it is turned correctly. It has two small plastic male tabs on the outside that must fit correctly into it's female counterpart socket on the C2 Main Electronic Unit. **DO NOT FORCE THIS CONNECTION** and a flashlight will be very helpful to study both the male plug and female socket to insure a correct connection.

Next, install **P7 Electronic Scorer** onto long top apron using pilot holes with **H4** Screws as shown in **FIGURE 3**. Tighten, but do not strip out H4 Screws.

